

# Personalized circulating tumor DNA analysis as a predictive biomarker in solid tumor patients treated with pembrolizumab

Scott V. Bratman, S. Y. Cindy Yang, Marco A. J. Iafora, Zhihui Liu, Aaron R. Hansen, Philippe L. Bedard, Stephanie Lheureux, Anna Spreafico, Albiruni Abdul Razak, Svetlana Shchegrova, Maggie Louie, Paul Billings, Bernhard Zimmermann, Himanshu Sethi, Alexey Aleshin, Dax Torti, Kayla Marsh, Jenna Eagles, Iulia Cirlan, Youstina Hanna, Derek L. Clouthier, Scott C. Lien, Pamela S. Ohashi, Wei Xu, Lillian L. Siu, and Trevor J. Pugh.

---

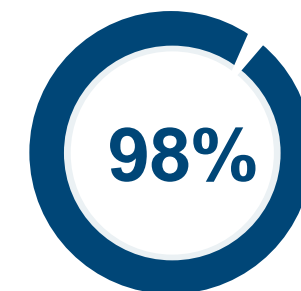
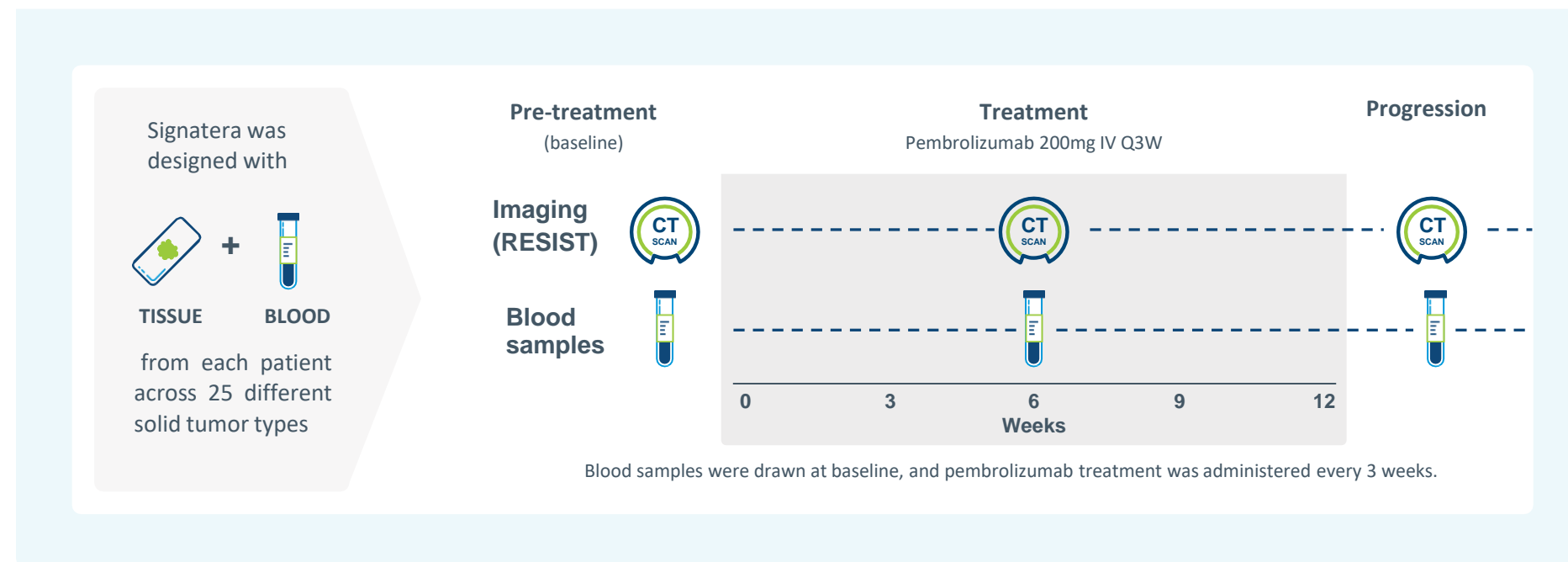
**nature cancer**

Published

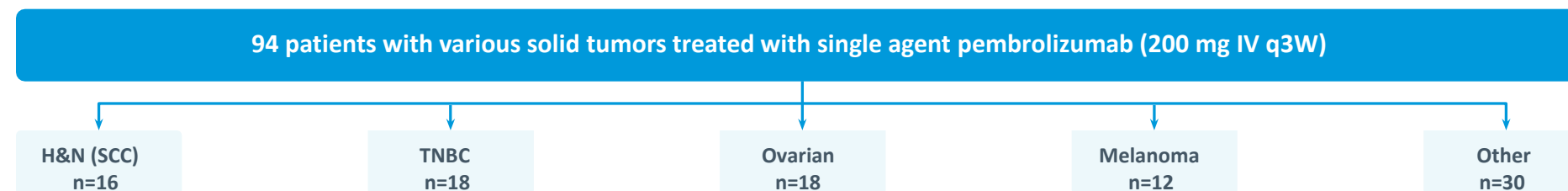


# Clinical validation for immunotherapy monitoring

## INSPIRE trial

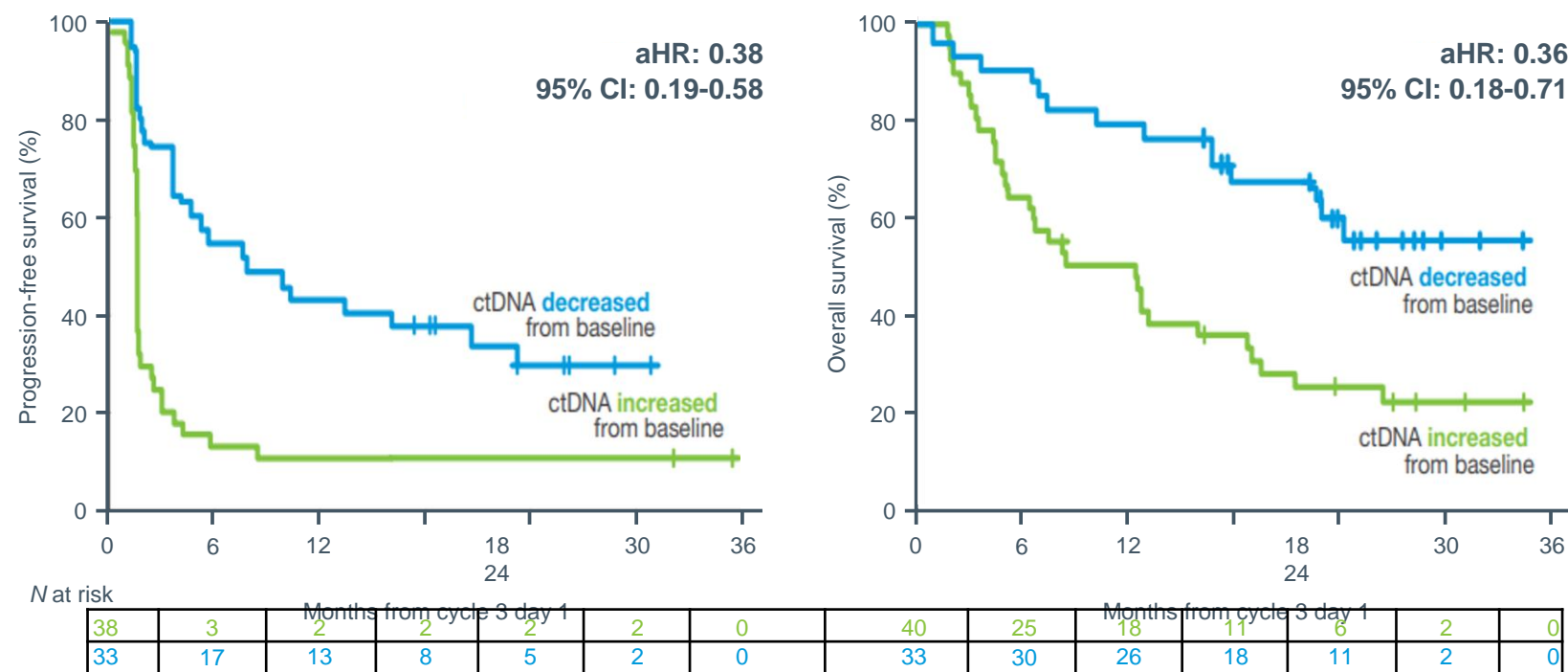


of patients had  
detectable baseline  
ctDNA across tumor  
types



# Predict immunotherapy benefit as early as week 6 with ctDNA dynamics

A decrease in ctDNA relative to baseline at the beginning of cycle 3 is a strong predictor of PFS and OS

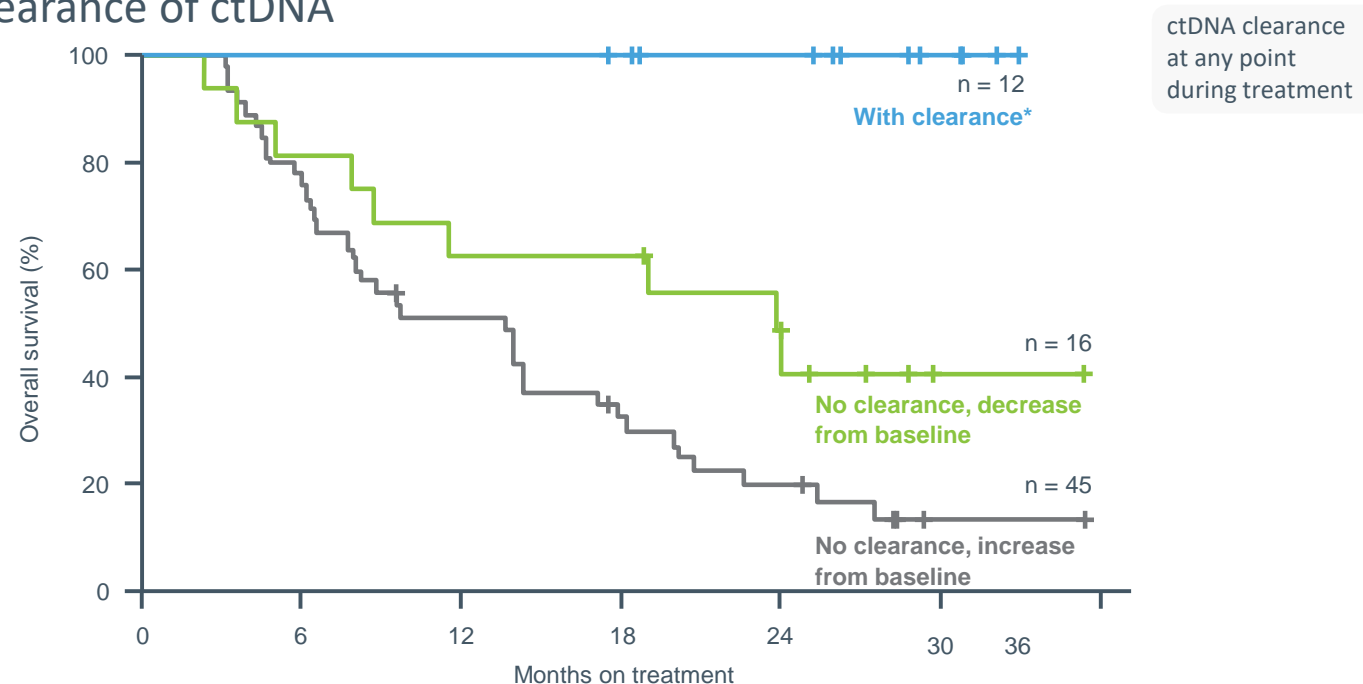


Bratman SV, Yang SYC, Iafolia MAJ, et al. Personalized circulating tumor DNA analysis as a predictive biomarker in solid tumor patients treated with pembrolizumab. Nature Cancer. 2020;1(9):873-881.

# ctDNA clearance at any time is correlated with overall survival

100% OS for patients who achieved ctDNA clearance during treatment

OS among patients with at least two ctDNA time points stratified by clearance of ctDNA



\*Median of 25.4 months of follow-up beyond first clearance  
ctDNA clearance defined as ctDNA undetectable for at least one on-treatment time point



Learn more at <http://www.natera.com/clinical-trials/>